



Maltings View*

George Street, Newark, NG24 1PD

£825 Per Calendar Month

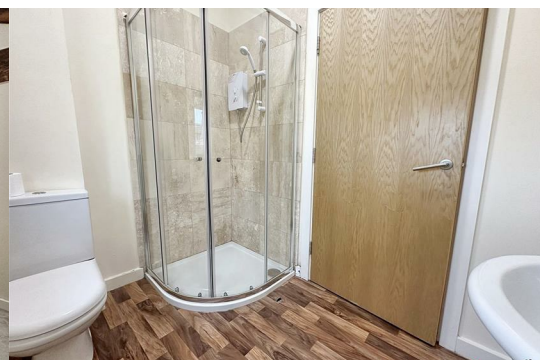


Nestled in the heart of Newark on the charming George Street, this splendid top-floor apartment offers a delightful blend of comfort and modern living. With three generously sized bedrooms, this property is perfect for families or those seeking extra space for guests or a home office.

The apartment boasts two well-appointed bathrooms, ensuring convenience for all residents. The layout is thoughtfully designed, providing ample room for relaxation and entertaining. Natural light floods the living areas, creating a warm and inviting atmosphere throughout.

Situated in a vibrant area, residents will enjoy easy access to local amenities, including shops, cafes, and parks, making it an ideal location for those who appreciate community living. The top-floor position not only offers privacy but also delightful views of the surrounding neighbourhood.

This property is a fantastic opportunity for anyone looking to settle in Newark, combining spacious living with a prime location.



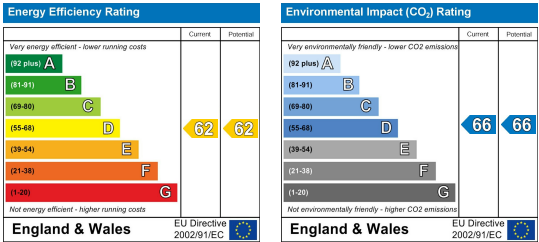
Area Map



Floor Plans



Energy Efficiency Graph



These particulars, whilst believed to be accurate are set out as a general outline only for guidance and do not constitute any part of an offer or contract. Intending purchasers should not rely on them as statements of representation of fact, but must satisfy themselves by inspection or otherwise as to their accuracy. No person in this firms employment has the authority to make or give any representation or warranty in respect of the property.